



# Australian Photographic Prize

## AWARDS 2024

The Australian Photographic Prize recognises exceptional photography from national and international photographers looking to showcase their best work.

All print entries and the top 35 entries in each digital category will be judged in Melbourne, Australia, by a live panel of esteemed professional photographers and experienced judges.



© Karen Waller

# RULES AND ENTRY INSTRUCTIONS

WHO and WHAT	3
Who can enter, What can be entered	3
Categories	3
PRIZES	4
Digital, Print, EIZO, Scalone, Student, Education	4
WHEN, WHERE and HOW	6
Important dates and location	6
How is it judged	7
Entry fees, How to enter	8
COMPETITION GENERAL RULES	11
<b>DIGITAL CATEGORY RULES</b>	13
Single Capture Categories - Nature, Life Events, Wildlife	13
Professional Categories - Aerial, Commercial, Family, Landscape	14
Creative Categories - Creative, Pet and Animal, Portrait	15
<b>EIZO PHOTOGRAPHIC ARTIST AWARD RULES</b>	16
<b>STEVE SCALONE URBAN ARCHITECTURE AWARD</b>	16
<b>PRINT CATEGORY RULES</b>	17
People, Places, Illustrative, Visionary	17
TERMS AND CONDITIONS	18
Disqualification, Copyright, Competition Legalities and COVID Policy	19
ABOUT THE AUSTRALIAN PHOTOGRAPHIC PRIZE	20
SPONSORS	20

# WHO AND WHAT

## Who can enter

The Australian Photographic Prize awards are open to national and international amateur, student, and professional photographers. There are separate prizes for National and International Category winners and Overall Prize Winners.

## What can be entered

Images submitted must be from original photographs captured by the entrant that have not been entered into previous Australian Photographic Prize competitions. All elements that make up an entry must have been captured on or after 3rd June 2019. Images captured prior to 3rd June 2019 are ineligible for entry (with exception to the Photographic Artist Award). Participants may enter an **unlimited number digital images** and **up to eight prints** into the print categories. However, you cannot enter the **same image** into multiple categories.

## Digital Divisions

**Single Capture** - Nature, Life Events, Wildlife

**Professional** - Aerial, Commercial, Family and Landscape

**Creative** - Creative, Pet and Animal, Portrait

## EIZO Photographic Artist Award

The prize for composite artist photographers with unique capture date rules.

## Print Categories

People, Places, Illustrative and Visionary.

## Steve Scalone Urban Architecture Award

In honour of Steve Scalone, enter your best urban architecture images.

# PRIZES

New to 2024, in each category there will be an International winner *and* an Australian winner announced. Both Australian and International winners will receive a title, eg. '2024 International Commercial Photographer of the Year', and trophy. Only Australian entrants will be eligible to receive prizes from sponsors. Australian first-place winners in digital and print categories will be eligible for division prizes and the 2024 Australian Photographic Prize Overall Digital or Print award, which includes a trophy and prize from Nikon. Non-cash prizes cannot be exchanged for cash and are not transferable.

## Digital Photographer of the Year - Sponsored by Nikon



The overall 2024 Australian Photographic Prize Digital winner will be selected from first-place digital category prize winners of Nature, Life Events, Wildlife, Aerial, Commercial, Creative, Family, Landscape, Pet and Animal, Portrait by a panel of five highly skilled judges by discussing assessment criteria and voting.

**Prize: Nikon Australia Voucher valued at \$5000**

## Digital Division Winners - Sponsored by Godox



The first-place digital category winners will be in the running to win their applicable division:

**Single Capture, Professional or Creative.** The winning image from each of the categories will be voted on by judges to receive the division prize.

**Prize: 3 x Godox Lighting Kits**

## EIZO Photographic Artist Award - Sponsored by EIZO



The overall 2024 EIZO Photographic Artist Award winner will be selected from the top five highest scoring digital entries by a panel of five highly skilled judges by discussing assessment criteria and voting.

**Prize: EIZO ColorEdge CS2400S Monitor**

## Print Photographer of the Year - Sponsored by Nikon



The overall 2024 Australian Photographic Prize Print winner will be selected from first-place print category winners of People, Places, Illustrative and Visionary by a panel of five highly skilled judges and art curators by discussing assessment criteria and voting.

**Prize: Nikon Australia Voucher valued at \$5000**

## Print Category Winners - Sponsored by Canson Infinity



The winners of each of the print categories, **People, Places, Illustrative and Visionary** will each receive a Canson Infinity Voucher. Category winners will be determined by judges vote on the top 5 highest scoring images from each category.

**Prize: 4 x Canson Infinity Vouchers valued at \$250 each**

## Steve Scalone Urban Architecture Award



The winner of the Steve Scalone Urban Architecture Award will receive a framed, limited edition signed Steve Scalone print. All entries will be pre-judged by a panel of highly skilled judges and the top 10 images will be printed and on display at the Australian Prize event judging days for public voting of the winner. Top 10 prints will be archived and all profits will be donated to the Cancer Council.

**Prize: Steve Scalone Artwork**

## Student Prize - Sponsored by The Print Shop



Students may elect to compete for an additional Student Prize, awarded to the highest-scoring image submitted by a primary, secondary or tertiary student. Student entrants are defined as those currently enrolled in primary school, secondary school, certified undergraduate photography or arts-related, tertiary education courses at the close of judging on Saturday 13th July 2024 (AEST).

**Prize: Printing Voucher for The Print Shop valued at \$500**

## Education Award - Sponsored by the Australian Photographic Prize

The Education Award winner is the Australian education facility with the highest total score from their top three entries by current students. Upon entry students must specify their education facility and be currently enrolled in a certified undergraduate photography or arts-related, tertiary education courses at the close of digital online entry at 5pm Monday, 1st July 2024 (AEST). The winning education facility will receive a trophy and claim the title of "Australian Photographic Prize Educator of the Year".

**Prize: Trophy and 2024 Title**

## WHEN, WHERE AND HOW

### 2024 Important Dates and Location

- Competition entry opens on 3rd June 2024 (AEST) and **closes at 5pm on Monday 1st July 2024 (AEST)**.
- All entries must be submitted digitally through the Australian Photographic Prize website: [www.australianphotographicprize.com.au](http://www.australianphotographicprize.com.au)
- Prints must be received at Photography Studies College, 37 Thistlewaite Street, South Melbourne, VIC 3205, by **5pm on Tuesday, 9th July 2024 (AEST)**.
- Judging of all prints and the top 35 entries from each digital category will take place at **Photography Studies College, South Melbourne** (and live streamed), from 9am - 5pm on Friday, 12th and Saturday, 13th July 2024 (AEST).
- **All in-person attendees to the judging and live workshops must register and purchase an entry ticket** before the event to comply with capacity requirements. The entry fee will include access to judging, lunchtime workshops and a light lunch on both days. All registered attendees will receive an ID lanyard, which must be worn at all times. Ticket price: \$15/day
- The **Australian Photographic Prize Awards Presentation Ceremony** will be held from 4:30pm - 6pm, Sunday 14th July (AEST) at Photography Studies College, South Melbourne, with pre-awards creatives lounge discussion panels from 2pm - 4pm. Ticket price (including grazing platter and drinks): \$55 per person.
- The **Australian Photographic Prize After Party** will occur on Sunday 14th July from 6pm onwards at Wayside Inn, South Melbourne. Limited tickets are available on the website: \$55 per person.

## How is it judged?

Digital, EIZO Photographic Artist, and Steve Scalone category entries will be pre-judged online by Australian and International professional photographers chosen for their extensive judging experience and photographic skill. Judging will take place online using calibrated monitors. Entrants will receive their image score/s and feedback (if pre-purchased) via email or logging into the Australian Photographic Prize website after all winners have been announced.

The top 35 highest-scoring images from each digital, and EIZO artist categories, and **all print entries** will be judged by a live panel of five judges. For the Steve Scalone Urban Architecture Award, all entries will be pre-judged by a panel of highly skilled judges and the top 10 images will be printed and on display at the Australian Prize event judging days for public voting of the winner.

Assessment criteria include visual impact, technical excellence, creative enhancement, artistic excellence, and print quality. Entrants will receive their image score/s live or by logging into the Australian Photographic Prize website. In addition, each image will receive a grading based on the following scoring ranges:

50 - 74 Pre-Award

75 - 79 Commended

80 - 89 Silver Award

90-100 Gold Award

The top five highest scoring images from each category will be voted on by category judges to determine the winner. The 2024 Australian Photographic Prize Digital and Print winner will be selected from relevant first-place category prize winners by a panel of five highly skilled judges by discussing assessment criteria and voting. The Australian Photographic Prize award ceremony will announce the top five category placegetters and the overall prize winner.

## DIGITAL ENTRY FEES

Single Digital Entry (Including EIZO Photographic Artist)	\$ 25 AUD
Digital Entry Bundle (Digital or EIZO) - 5 entries for the price of 4	\$ 100 AUD
Individual Written Feedback (per image - Digital and EIZO Artist only)	\$ 5 AUD

## PRINT ENTRY FEES

Single Print Award Entry	\$ 55 AUD
Full House Entry - 8 entries for the price of 7	\$ 385 AUD
Optional Professional Print Service (per print)	\$ 28 AUD
Optional return postage fee (prints will be otherwise archivally stored) (Visionary category entries costing more than \$35 to post will be charged at cost for return.)	\$ 35 AUD

## STEVE SCALONE URBAN ARCHITECTURE AWARD

Single Entry	\$ 15 AUD
Individual Written Feedback (per image)	\$ 5 AUD

*Note: All profits of this award will be donated to The Cancer Council*

## HOW TO ENTER

Entries into the Australian Photographic Prize Digital, EIZO Photographic Artist and Steve Scalone categories must be submitted as digital entries only. Entries into print categories must be submitted as **both** digital and print entries, only the print entry will be judged, digital entry is for scrutineering and digital display purposes. For further step by step entry instructions please refer to 'How to Enter' on the website.

### Image entries must comply with the following specifications:

1. Naming format: category\_firstname\_lastname\_Image#.jpg  
Image# relates to the number of the entrant's entry, with the first entry uploaded titled Image1, the second entry uploaded Image2, etc., e.g. Landscape\_Robyn\_Campbell\_Image8.jpg



2. JPEGs only are accepted. If requested, raw files must be provided by the entrant; see page 11 for complete details.

- 3000px on the longest side
- Convert to sRGB Profile
- Save as maximum quality JPEG

3. All entries must be uploaded by **5pm on Monday, 1st July 2024 (AEST)**.

4. Entries into print categories require your image to be uploaded by **5pm on Monday, 1st July 2024 (AEST) AND be printed**, posted and received at the judging venue, Photography Studies College, by **5pm on Tuesday, 9th July 2024 (AEST)**.

5. The APP Professional Printing option is available through the entry portal. Paper choices are:  
Canson Infinity Baryta Photographique II (Warm Base/Satin Finish)

Canson Infinity Platine Fibre Rag (Pure White/Satin Finish)

Canson Infinity Rag Photographique (Warm Base Rag Paper)

Canson BFK Rives Pure White (Cool Base/Rag Paper)

See Canson website for further information in regards to paper choice. Prints ordered through the Professional Printing Service are formatted to vertical/horizontal depending on image and are automatically **packaged, labelled and delivered to the venue**.

6. Prints smaller than A3 are acceptable. However, other than the Visionary Category, images printed or mounted larger than A3, such as A3 Plus, will not be judged. **There is no mounting required.**

7. Package your images individually in acid-free plastic sleeves. Packs of 25 A3 sleeves are available here: [Clear Plastic Sleeves for A3 Prints \(25 pack\) - Global Image Products](#)

Factors to consider when creating your print include:

- Prints will be judged using display boxes optimised for A3 sized vertical or horizontal prints (see example below) and attached using magnets on the corners.
- A black keyline to define the edge of your image is permitted (see the example below).
- There is no minimum print paper or image size. However, magnifying glasses will not be supplied to judges, so ensure images are accessible to all reasonable eyesight levels.
- Prints will be judged under Just Normlicht Daylight Prographic Lamps with 5000K correlated colour temperature. The light intensity is equivalent to an exposure set at 100 ISO, f/2.8 at 1/125. (Graphical industry defined in standard ISO 3664:2009).

8. Print and attach each print's identification label (available by logging into website after entry) to that print's acid-free plastic sleeve. **DO NOT SEAL THE SLEEVE.** The sleeve will be removed prior to judging to ensure anonymity is maintained.

8. Package your prints in a **flat** cardboard mailer or print paper box clearly labelled **DO NOT BEND.**

9. If you would like your prints returned after judging, include a name and address label and ensure the \$35 return postage fee is paid during entry. Prints that are not returned will be added to the Australian Photographic Prize Photography Catalogue. The catalogue is an archivally stored historically based acquisitive collection of Australian Photography.

10. Post your entries to:

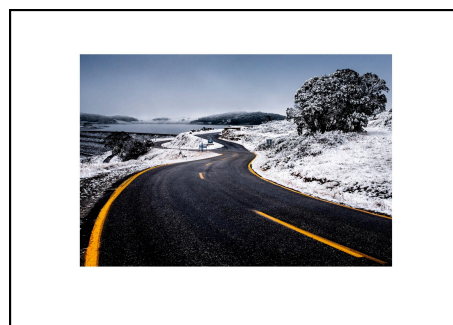
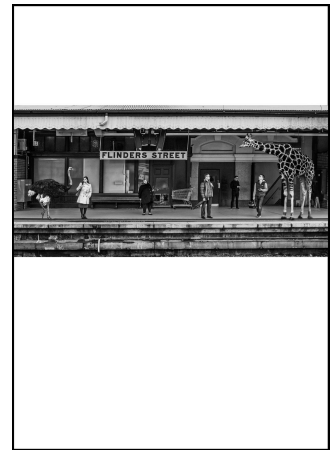
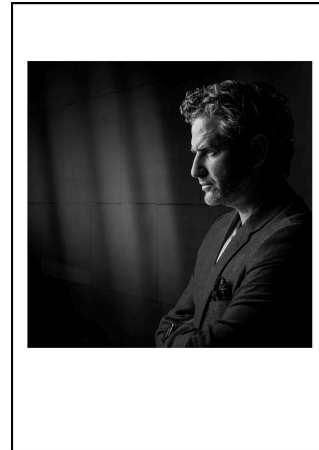
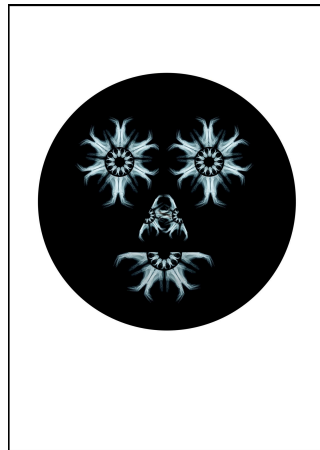
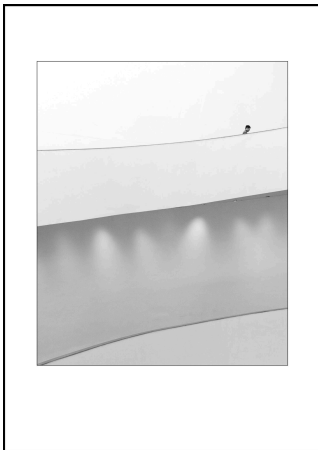
AUSTRALIAN PHOTOGRAPHIC PRIZE,  
CO/- Photography Studies College,  
37 Thistlewaite Street,  
SOUTH MELBOURNE VIC 3205



**PHOTOGRAPHY  
STUDIES COLLEGE**

**Prints must be received by 5pm on Tuesday, 9th July 2024 (AEST).**

NOTE: If your prints arrive damaged through the post, the team will try to contact you to replace them if they have enough time. The best way to ensure your images are judged is to package them securely for postal handling in the first place. Examples of A3 formats:



# COMPETITION GENERAL RULES

The Australian Photographic Prize is designed to celebrate the best photography from Australia and International entrants. Thanks to our generous sponsors, entrants have the opportunity to gain international recognition, claim titles and win fabulous prizes.

The following general rules apply to all image categories:

- All images entered, including individual elements used to make up an entry, must be **100% photographic in origin.**
- Images incorporating stock are not permitted, only original photographs taken by the entrant are allowed. In-camera recognition and editing programs such as Photoshop are allowed; however, **images partially or wholly generated using Artificial Intelligence (Ai), the Photoshop Generative Fill tool, or similar AI-based tools are strictly prohibited.** The primary objective of this rule is to ensure that all entries are based on genuine photographic content to maintain the integrity of the competition.
- All entries must be entirely the work of the entrant, including all post-production work. Post-production work completed by another person is not permitted. Images captured by workshop participants at a workshop where the instructor has created the set, lighting, model or concept are ineligible; instructors are exempt. Images captured on photo tours where the primary focus is educational cannot be entered.
- Printing of images may be outsourced to a professional lab; however, any modifications to the image beyond standard print practices must be directed by the entrant.
- All images and individual elements within an image must have been captured on or after 3rd June 2019. Each image entered must contain the original capture metadata or, in the case of a composite image, have the original metadata and capture for each element available if requested. This rule does not apply to the Photographic Artist Award category, in that category, elements may have been photographed at any time. However, the overall image finishing date must be on or after 3rd June 2019.
- **Any digital files where the entrant has taken deliberate action to 'clean' their file, removing all meta-data, will be automatically disqualified.**
- Images must not infringe copyright, moral rights, property, person, or other third-party rights.

- RAW files may be requested during initial vetting; if so, they must be submitted by Friday, 11th July 2024. RAW files may also be requested to validate finalists when judging is complete; if so, they must be submitted within 24 hours. Failure to submit RAW files upon request will result in disqualification of the entry and forfeiture of any prizes awarded.
- An independent third party will carefully review a randomly chosen selection of entries to confirm that submissions are original photographic works, free from copyright infringement and do not contain content generated by artificial intelligence.

- **Post-production:**

- All digital backgrounds, textures, and elements must be derived from original photographs taken by the entrant. Multiple images, presented as a diptych, triptych, etc., are permitted in all categories.

- **Single Capture categories** - Nature, Life Events and Wildlife

Post-production techniques may only be used to enhance an image without altering the authenticity of the scene or subject matter of the original capture. Except for cropping, the addition, removal, relocation, or replacement of pictorial elements is prohibited, except for safety restraint devices such as dog leads. Composite images are not permitted.

- **Professional Categories** - Aerial, Commercial, Family, Landscape, Places

Composite images are allowed as long as digital post-production serves to enhance rather than fundamentally alter the visual message.

- **Creative Categories** - Creative, Exploration, Illustrative, People, Pet and Animal, Portrait, Visionary, EIZO Artist, Steve Scalone Award

The full range of post-production and digital manipulation techniques, including composites, are permitted. All elements of an entry must be 100% photographic in origin.

## DIGITAL CATEGORY RULES - SINGLE CAPTURE

Only single-capture images (including images captured using HDR, focus stacking, long exposures and stitched images) are permitted. Post-production techniques may only be used to enhance an image without altering the authenticity of the scene or subject matter of the original capture. Techniques that remove in-camera elements, such as dust spots, digital noise, and film scratches, are allowed. Except for cropping, the addition, removal, relocation, or replacement of pictorial elements is prohibited, except for safety restraint devices such as dog leads. Composite images are not permitted. A 25-word statement to provide context, who, what, when, etc. is permitted.

### Nature

Images should show the beauty of nature. Images must not contain human or manmade elements. Basic post-production techniques, such as colour and brightness adjustments, cropping, dodging and burning are allowed, however, colour images must appear natural.

### Life Events (inc. documentary/wedding)

Weddings, parties, births, funerals, significant life events, as well as sport, daily life, a newsworthy incident. Photographs should have an impact or provoke a lasting emotional response. Staged, contrived, or manipulated situations that alter the truth are unacceptable. Basic post-production techniques, such as colour and brightness adjustments, cropping, dodging and burning, are allowed.

### Wildlife

Images should show the beauty of wildlife captured in their natural habitat. Images must not contain human or manmade elements. Entries must not portray any form of organised or intentional cruelty. Basic post-production techniques, such as colour and brightness adjustments, cropping, dodging and burning are allowed, however, colour images must appear natural.

# DIGITAL CATEGORY RULES - PROFESSIONAL CATEGORIES

Composite images are allowed as long as digital post-production serves to enhance rather than fundamentally alter the visual message.

## Aerial

Aerial landscape photography captures the beauty of the earth's contours and textures from a unique vantage point. Images taken from helicopters, planes, drones, or from a high vertical perspective are accepted. Drone photography must comply with regulations relevant to capture geographics. The primary emphasis should remain on natural scenery.

## Commercial (inc. architecture/travel)

Commercial entries are images created for commercial clients to promote a product or company, including advertising, fashion, still life, food, architecture, and corporate photography. Text graphics are not allowed, but a 25-word description of the commercial use of the image is allowed. Composite images are allowed as long as the digital post-production is not a significant part of conveying the visual message. However, all components must have been created by the photographer.

## Family (inc. maternity/newborn)

A photograph containing two or more individuals sharing a close emotional bond. A moment that highlights connection, love, and intimacy between individuals or family members; this may include parents, children, grandparents, or friends. Maternity photography may focus on the mother's emotions, or bond with her unborn child. Newborn photography includes posed, lifestyle, creative, or documentary styles. Original concepts and unique styles are encouraged, with no purchased digital backgrounds allowed.

## Landscape

For this competition, a landscape is a photograph of natural scenery but may include people, or manmade elements, provided none of these additional elements dominates the photograph. Composite images, including stitched panoramas, are allowed as long as digital post-production is not a significant part of conveying the visual message. Digital Aerial images should be placed in the digital aerial category.

# DIGITAL CATEGORY RULES - CREATIVE CATEGORIES

The full range of post-production and digital manipulation techniques, including composites, are permitted. All elements of an entry must be 100% photographic in origin.

## Creative

Let your imagination go wild through the unusual combination of subjects, textures, colours, or viewpoints. Use in-camera or post-production techniques for novel or creative effects. The base image and all additional elements used must be photographic in origin and captured by the entrant, with no text graphics allowed. The competition allows composite, non-composite, and highly manipulated images, but the photographer must have created all components.

## Pet and Animal

Entries must reflect the appearance, essence or personality of the pet or animal depicted in the image; partial capture of form or shape, rather than a whole animal, may be better off in creative categories. Humans may be seen; however, they should not be the main element of the image.

## Portrait

The purpose of a portrait photograph is to capture the subject's essence and convey their personality, character, and story. Entries must include at least one person and may range from candid photographs to formal portraits of families, groups, and individuals. The full range of post-production and digital manipulation techniques, including composites, are permitted.

## PHOTOGRAPHIC ARTIST AWARD RULES



### Photographic Artist Award - Sponsored by EIZO

The premise of this award is to honour the unique creativity and skill of the photographic composite artist. While photography is a large part of a photographic artist's image production, there is often an equal weighting on the post-production skill required to bring a composite together.

As a unique feature of this category, captures used within a composite may be from any date. However, the artwork creation date must be on or after 3rd June 2019. Show us your ultimate creativity across any chosen genre or theme. The full range of post-production and digital manipulation techniques is permitted. Entries are submitted as digital entries.

## STEVE SCALONE URBAN ARCHITECTURE AWARD

The Steve Scalone Urban Architecture Award celebrates the legacy of Steve Scalone, a beloved figure in the photography community. Steve's work exemplified a minimalist and geometrically smart approach to urban landscapes with a focus on clean lines, striking geometric shapes, and a minimalist aesthetic. This award seeks to honour Steve's memory by showcasing architectural images that reflect his style.

Entry profits for this category will be donated to the Cancer Council.





# PRINT CATEGORY RULES

## People

Portraits that celebrate the human experience. From personal projects to travel adventures and highly creative portraits, this category is for photographs of people that tell a story, deeply resonate, and capture the essence of individuals. The full range of post-production techniques, are permitted. All elements of an entry must be 100% photographic in origin.

## Places

Photography of diverse locations with a genuine sense of place that can include both natural landscapes and manmade elements. Places that leave a lasting impression, and invite introspection for viewers with the beauty and significance of the environment captured. Aerial images are permitted. Composite images are allowed as long as digital post-production serves to enhance rather than fundamentally alter the visual message.

## Illustrative

Illustrative entries are unique visual stories that capture narratives, evoke specific feelings, or add layers of meaning within an image. Photographs can be simple or complicated, and may leave room for ambiguity, inviting viewers to explore their own interpretation of the image. The full range of post-production techniques, are permitted. All elements of an entry must be 100% photographic in origin. An artist statement of creative intent 25 - 50 words in length is optional.

## Visionary

The Visionary category is a homage to creativity unbound. Unleash your most imaginative and unconventional photographic works. Draw inspiration from your own subconscious, surrealism, expressionism, and creative outlets to challenge conventional imagery. This is the category to push boundaries, experiment fearlessly, and redefine visual storytelling. Unique to the Visionary category you can enter flat images up to A1 in size or 3D photographic or sculpture-based images up to 40cm in height, width and depth. (Return postage above \$35 charged at cost.) All Visionary entries MUST contain an artist statement of creative intent 25 - 50 words in length.

# TERMS AND CONDITIONS

## Disqualification

If an entrant knowingly breaks the rules, their image/s will be disqualified, and awarded prizes must be returned. In addition to breaking general or category rules, images may be disqualified if:

- An image is considered plagiarised (although homage to an artist is acceptable).
- An image contains inappropriate content for public viewing, including obscene, provocative, defamatory, sexually explicit or otherwise objectionable content.
- The image does not meet the size and file specifications outlined in the rules.
- An image contains information (e.g. graphics or a watermark) that identifies the creator.
- The entrant cannot supply requested RAW/capture files within 24 hours.

The Australian Photographic Prize organisers have the right to re-categorise, remove and disqualify any entry without public dispute.

## Copyright

Copyright of all images entered will remain the property of the entrant. The Australian Photographic Prize reserves the right to use images entered, whether awarded or not, for marketing, promotion or education. The entrant owns all rights and takes full responsibility that the work submitted is original and does not infringe any third party's copyright, moral rights, or other rights. The entrant will indemnify and keep indemnified any claim by a third party concerning their work.

Images entered and scored within the Gold award range may be selected for a showcase exhibition to gain publicity for the winners and the Australian Photographic Prize competition. Images will be credited to the photographer.

## Competition Legalities

Entry fees and prizes are quoted in Australian dollars. The total prize pool of cash and prizes across the Australian Photographic Prize awards is \$20,000. Prizes will be as stated, with no alternative prizes available for winners. If the Australian Photographic Prize cannot contact the winning entrant by phone or email within a reasonable timeframe, the judges may award the prize to another entry. The entrant is responsible for transport and delivering prizes if living outside Australia. The Australian Photographic Prize event promoter is the Trustee of the Melbourne Headshot Trust ABN 73798720731.

Digital Entries open at 9am Monday, 3rd June 2024 and close Monday, 1st July 2024 at 5pm (AEST). Prints must be received to the judging venue by 5pm on Tuesday, 9th July 2024 (AEST). No late entries will be accepted. Australian Photographic Prize Awards Ceremony will commence at 4:30pm on Sunday, 14th July 2023 (AEST) and will NOT be live-streamed. Category winners will be posted to the Facebook Community Page.

The decisions of the judges and the Australian Photographic Prize concerning any aspect of these awards **are final. No further discussion will be entered into.** Also, the Australian Photographic Prize will interpret areas or issues not explicitly covered by these terms and conditions and other competition rules if and as they arise. All due care will be taken in returning entries, however, the Australian Photographic Prize will not be held responsible for any damage of entries while in possession of or in transit, to or from the competition.

We request that entrants hold back on sending feedback about the awards or entrant's scores **for one week after the event** to allow time for emotional processing and self- reflection.

## COVID Policies

The Australian Photographic Prize event will adhere to the Victorian Health Public Events Framework. Australian Photographic Prize judging will continue in an online format or, at last resort, delayed if in-person formats are not permitted. Refunds will not be given for events or judging sessions that still proceed in alternative formats and times.

# ABOUT THE AUSTRALIAN PHOTOGRAPHIC PRIZE

## Who we are

The Australian Photographic Prize is directed by Robyn Campbell, who, together with the Australian Photographic Prize team, have collaborated with various photographic communities to create a diverse event for photographers of all levels. They appreciate the support of volunteers, judges, staff, and team members who have helped make this all-inclusive event possible.

We acknowledge and pay our respects to the Traditional Owners of the land on which the Australian Photographic Prize will take place, the Wurundjeri Woi-wurrung and Bunurong Boon Wurrung peoples of the Eastern Kulin and pay our respect to their Elders past, present and emerging.

## Additional information

Please visit our FAQ or Facebook Community page first to answer any questions. If you cannot find the answer, please contact us: [hello@australianphotographicprize.com.au](mailto:hello@australianphotographicprize.com.au)

## AUSTRALIAN PHOTOGRAPHIC PRIZE SPONSORS

